

KP 1200s



Drum Pump for high viscosity Materials in 200L Barrels

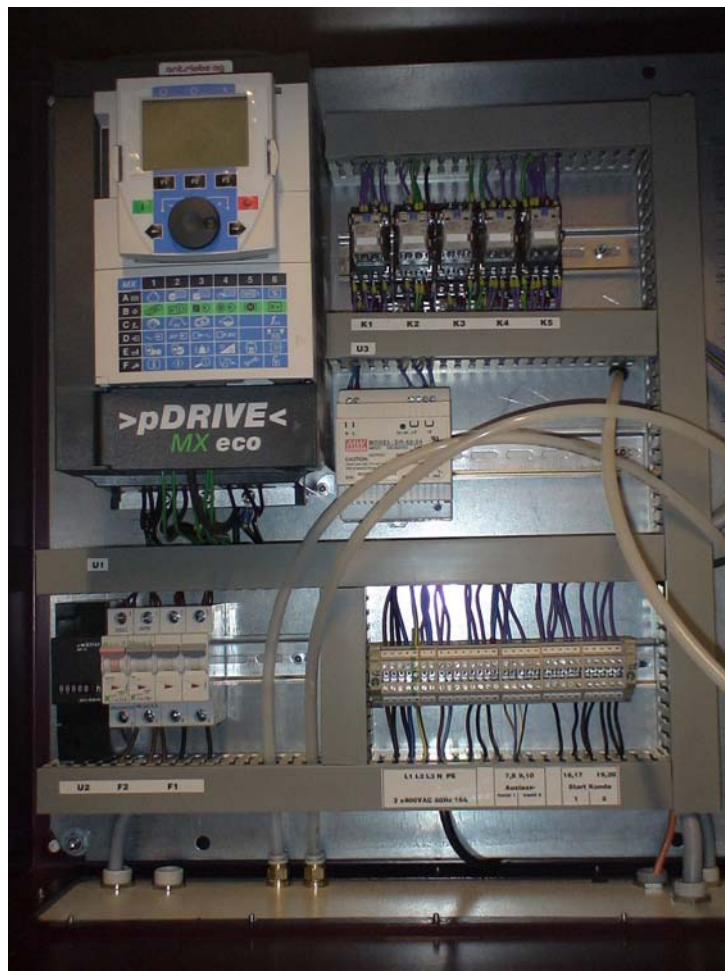
Extruder Pumps available	ø35, ø40 ø50mm	<u>Dimensions</u>	
Material Quantity	dependent on Product up to 1700 gr./min.	Length	1300 mm
Material Pressure	up to 250bar	Width	625 mm
Motor Power	1,5 - 2,2 - 3kW	Height	1'320 mm
Motor Speed	20 - 300 min. ⁻¹	Weight	approx.250 kg
Power Requirement	400/230V50Hz 16A	Barrel Diameter	580mm
Air Pressure	6bar	Barrel Height	850mm

Seal & Coating AG



Front panel with

- Main Switch
- Speed Regulator for Extruder Pump
- Air Pressure Push Button to blow up the Follower Plate from the empty Barrel.
- Pneumatic Lever Switch for up / down movement of the Follower Plate



Electric Box with Frequency Inverter



⇐ End Limit Switch for the Barrel empty Control.

The Barrel empty Signals stop the Pump after completing the running Application.

Assembly of Follower Plate, Pump Coupling, Gear Motor and Material Hose connection.

